

# Champions

Home > Customers > Customer Success Stories > Champions



## Customer

Champions partners with principals, teachers, and parents to create more than 470 before- and after-school and year-round learning environments. Champions is a member of the KinderCare Education family, one of the world's largest education companies. KinderCare Education serves 200,000 children in 39 states, and Champions serves more than 19,000 of those children in 16 states and Washington, D.C.



Technologies and Industry

Eagle Creek At A Glance

Industry: Other

Technologies:



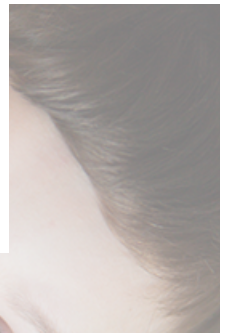
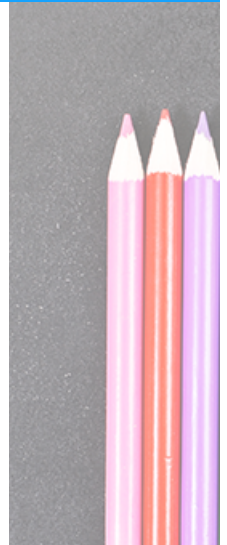
## Challenge

Prospective Champions customers visited the marketing owned landing page 'discoverchampions.com' looking for before and after-school childcare programs. To enroll their children, parents were to create an account by connecting to the Champions Parent Portal –an outdated platform that didn't reflect the same look and feel of marketing's modern landing page. Parents provided feedback



## Solution

Eagle Creek was selected to rebuild a Champions' Parent Portal compatible with its modern marketing landing page. Building this digital platform involved a multi-phase process utilizing a full Agile lifecycle methodology. Enrollment and scheduling processes were built on Angular technology, and the remaining front-end functionalities were rebuilt with new user interfaces. Existing backend functionalities remained unchanged and the existing payment process remained secure and safe for parents. Enhanced instructions on web pages, and a logical and fully functional design were developed to provide an intuitive and user friendly customer experience. Eagle Creek's highly-skilled teams were also selected for Champions' ongoing maintenance and support operations.



10050 Crosstown Circle  
Eden Prairie, Minnesota 55344

- [About Us](#)
- [Customers](#)
- [Partners](#)
- [Technology Centers](#)
- [Community Engagement](#)
- [Contact Us](#)

SIGN UP for our MAILING LIST